

## Better Stands Onsite Report - The Battery Show Europe 2025

6-E70 / Zeiss Industrial Quality Solutions

Complete

### Stand Information

**Hall Number** 6

**Stand Number** 6-E70

**Exhibitor Name** Zeiss Industrial Quality Solutions

**Square Meterage** 27

**Exhibitor Appointed Contractor** ET Global GmbH

**Better Stands Representative - Email** info@pbum.de

### Better Stands Onsite Report

**Stand structure and walls**  
(e.g. Structure or framework of the stand, walls, panels for meeting rooms, backdrop.)

**Will they be re-used after this event?**

Aluminium framing with MFC cladding will be reused by contractors

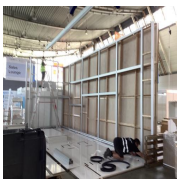


Photo 1



Photo 2



Photo 3



Photo 4



Photo 5

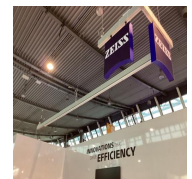


Photo 6



Photo 7

### Main Material of Stand Structure and Walls

Aluminium

Melamine Faced Chipboard  
(MFC)

**Platform / Raised Flooring**  
(Structure of flooring excluding surface covering, e.g. carpet)

**Will it be re-used after this event?**

Reusable flooring system



Photo 8



Photo 9

**Furniture and Equipment**  
(Counters, chairs, tables, sofa, coffee table, cabinet, flyer stand, LED walls, TV, AV equipment etc.)

**Will they be re-used after this event?**

Hired

**Lighting**  
(e.g. All kinds of lightings in the stand and showcases)

**Will they be re-used after this event?**

On rig

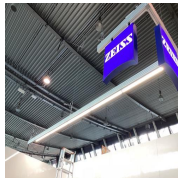


Photo 10

**Fascia and/or Overhead Signage**  
(Overhead signage or branding, Fascia, company logo on top of the stand structure)

**Will they be re-used after this event?**

**Rigged Structure**  
(Any rigged structure including lighting gantries or other structural elements.)

**Will they be re-used after this event?**



Photo 11

**Ceiling**

(Any form of ceiling e.g. fabric ceiling, solid ceiling for lights or stand support)

Will it be re-used after this event?

**Display Facilities**  
(Built-in or Detachable product display cabinets, Lightboxes etc)

Will they be re-used after this event?

Y

**Flooring**  
(e.g. carpeting, floor tiling, HDF coverings, Underlay)

Will they be re-used/recycled after this event?

Y - Reused

Contractor uses the same building material for top flooring and in fills for stand structure



Photo 12



Photo 13

**Graphics & Decorative Items**  
(e.g. Stand graphics that are wall mounted or floor standing not overhead and any other decorative items such as plants & flowers, models or ornaments)

Will they be re-used/recycled after this event?

Y - Reused

Sticker graphic



Photo 1



Photo 2



Photo 3



Photo 4



Photo 5



Photo 6





Photo 7



Photo 8



Photo 9



Photo 10



Photo 11



Photo 12

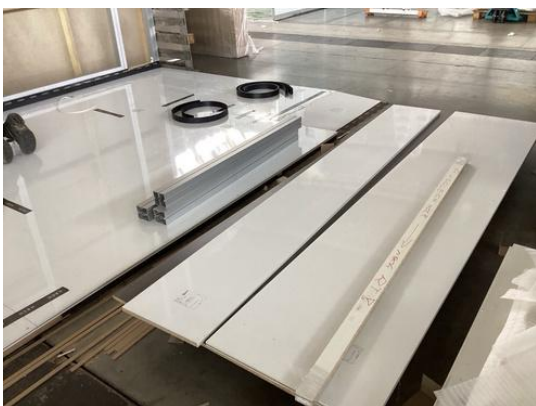


Photo 13